



Some scientific discoveries  
are reached by rocket.

You can get to this one by bus.



Discover a place where kids, families, parents, grandparents and students explore exciting and interactive exhibits that engage the hands, the mind and the imagination.

With special events, limited engagement exhibits and IMAX® films, as well as impromptu demonstrations and walk-up activities, you'll discover something new every time.

#### In our permanent exhibit galleries . . .

The World We Create has more than 40 activity stations and celebrates the creative thinking that makes scientific advancements possible.

The World Within Us explores all things related to the body, health and wellness and medical breakthroughs.

The World Around Us brings natural and earth sciences to life in a wide range of interactive and multimedia activities.

Also explore the Discovery Gallery, where you'll find longtime visitor favorites, including a mummy, polar bears and a Gemini trainer.

#### Drop-off and Parking

Visitors may be dropped off in our loading zone directly in front of the Louisville Science Center. Free motor coach parking is nearby. We also have a covered parking lot directly behind our building.

#### Dining

Subway® restaurant is on site, with numerous economic to luxury dining options within a short walking distance. Or, feel free to "brown bag" it and utilize our lunch room, available for just \$.50 per person.

#### Accessibility

The Louisville Science Center is completely wheelchair accessible.

#### Convenient Location (and a view, too!)

In Downtown Louisville on the banks of the Ohio River, we are conveniently located on historic Main Street in the heart of the Museum Row district. Our fourth floor Riverview Room event space offers a beautiful view of the river.

#### Directions

Louisville is one of the most accessible cities in America and is within a day's drive of more than half the nation's population. Centrally located and well connected to points north, south, east, and west, you'll be here in no time.

#### Hours

Sunday – Thursday, 9:30 a.m. – 5:00 p.m.  
Friday and Saturday, 9:30 a.m. – 9:00 p.m.

Hours, admission prices, and film closing dates are subject to change.  
Please call or visit our website for updates.

#### Group Pricing

A group is 10 or more people. Pricing listed below is per person. Reservations are required at least 48 hours in advance to qualify for the group rate.

Permanent Exhibits and an IMAX Film Combo	\$10
Permanent Exhibits Only	\$8
IMAX Film Only	\$5

#### Special Pricing for *Star Trek: The Exhibition*

January 23, 2011 – May 22, 2011

Gallery Pass (Permanent Exhibits, plus <i>Star Trek: The Exhibition</i> )	\$16
<i>Star Trek: The Exhibition</i> Only	\$8
IMAX Film Only	\$5
Add-an-IMAX Film (to Gallery Pass or <i>Star Trek: The Exhibition</i> Only)	\$2

#### Do Science While You're Here

Add a lab or activity to your experience. Each add-on program is \$5 per person, and is 30-40 minutes long. Labs and activities must be booked 3 weeks in advance.

#### Whose DNA Was Left Behind?

Feel like real CSI detectives as you use forensic techniques like DNA analysis, micropipetting and gel electrophoresis to solve the mystery from a hypothetical crime scene.

#### Ice Cream Lab

Learn the science behind ice cream. Make ice cream using liquid nitrogen and learn about the phase changes of the states of matter. Then, taste your creation.

#### Tech Quest

Use handheld wireless devices to explore our exhibits in a technology-driven scavenger hunt! Discover answers to some of the most intriguing questions our universe has to offer.

#### Need Meeting Space, Too?

Looking for a great place to hold an event or meeting while you're here? Whether it is a lavish catered reception or a small meeting, the Louisville Science Center has several private event space options to meet your needs.

#### Contact

For more information or to make group reservations, please contact our Group Sales Office at 1-800-591-2203, ext. 6134, or 502-561-6100, ext. 6134.

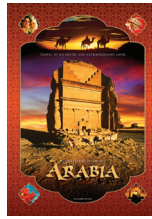


727 W. Main Street / Louisville, KY 40202 / 502-561-6100 / LouisvilleScience.org

# IMAX® Films

**Arabia** | Now showing through May, 2011

Travel to an exotic and extraordinary land. *Arabia* will have you riding the dunes with a camel caravan, diving into the treasure-laden Red Sea, exploring the ruins of a towering lost city, hurtling back into the Islamic golden age of invention, and joining the Hajj, where each year two to three million Muslims arrive in the holy city of Makkah to reaffirm their faith, creating the largest single human gathering on Earth.



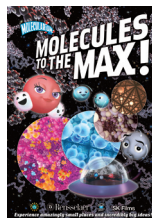
**The Light Before Christmas** | Nov. 13, 2010 - Jan. 2, 2011

After losing their way on a cold, blustery Christmas Eve, two children find themselves visiting their home. This stunning stop-motion animated film features lavishly detailed sets and characters inspired by the fascinating designs of renowned artist James C. Christensen with a musical score of beloved Christmas classics.



**Molecules to the MAX!** | Now showing through Dec. 17, 2010

Catch a ride to NanoSpace with Oxy and her crew as they fly through snowflakes, explore the metallic maze of a penny, escape chewing gum and more.



Sponsored by University of Louisville, J.B. Speed School of Engineering, UofL MicroNano Center, and KY NSF EPSCoR

**Animalopolis** | Ongoing

Take a humorous journey inside the magical world of animals, full of "Seussian" style rhymes guaranteed to bring smiles and chuckles. Whether going nose to nose with hippos as they graze upon nature's massive salad bar, or eye to eye with dancing bears, discover how nature provides humor and wonder everywhere.



**Legends of Flight** | Opens January 3, 2011

In the hundred-year-plus history of aviation, truly radical new aircraft designs come along only once in a generation. Pilot important milestone aircraft that contributed along with the world's natural fliers, to the dawn of a new era in commercial aviation. See the first public flight of the massive, but super efficient Airbus A380 at the 2007 Paris Air Show and the first flight of the smaller, even more efficient 787, the first ever carbon fiber airliner that made its maiden flight in 2009. You'll also get an insider's view of how a modern aircraft is built and learn the manufacturing challenges and risks involved in radical new designs.



**Hubble** | Now showing through Dec. 17, 2010

Witness the greatest success in space since the moon landing – the Hubble Space Telescope. Accompany space-walking astronauts as they attempt some of the most difficult tasks ever undertaken in NASA's history. Experience up close the awesome power of the launches, the heartbreaking setbacks and the dramatic rescues of this powerful story.



**Sea Rex** | Now showing

Join Julie, an imaginative young woman, as she travels from a modern-day aquarium to the Triassic, Jurassic and Cretaceous periods. Explore an amazing underwater universe inhabited by larger-than-life creatures including the powerful Liopleurodon, long-necked Elasmosaurus and gigantic Shonisaurus which were ruling the seas before dinosaurs conquered the earth. Thanks to state-of-the-art ultra-photorealistic imagery, see science come alive in a unique and entertaining manner. Immerse yourself in a lost age, 200 million years back in time, and get ready for a face-to-face encounter with the T-Rex of the seas!



# Limited Engagement Exhibitions

**Sesame Street Presents: The Body**

July 3, 2010 – January 2, 2011

This amazing educational exhibition teaches children how their bodies work and how to stay healthy as they hop, jump, run and dance their way through this hands-on *Sesame Street* adventure! The loveable Muppets from *Sesame Street* anchor an exciting collection of hands-on, interactive and multimedia experiences that allow children and adults to explore the human body. Kids can enjoy Elmo's World, challenge themselves on Super Grover's Obstacle Course, visit Mr. Hooper's Store and more!



Created and produced by  
sesameworkshop.

The nonprofit educational organization  
behind Sesame Street and so much more



Sesame Workshop®, Sesame Street® and associated characters, trademarks and design elements are owned and licensed by Sesame Workshop. © 2010 Sesame Workshop. All Rights Reserved.

**Star Trek: The Exhibition**

Presented by at&t

January 23, 2011 – May 22, 2011

By simultaneously taking you into the universe of the future and the past, *Star Trek: The Exhibition* allows you to reconnect with iconic *Star Trek* moments and characters while exploring the creative spirit of science fiction that gave us many of today's modern marvels.



**The Chronicles of Narnia: The Exhibition**

Opens June 2011

Fire a giant catapult, lift a sword and build a castle archway! In *The*

*Chronicles of Narnia: The Exhibition*, guests discover the science and wonder illuminated in the blockbuster Disney film series and the timeless works of author C.S. Lewis. With hands-on, interactive elements and original film artifacts, guests encounter topics like geography, archeology, engineering, humanity's impact on nature and environmental changes. The exhibition was produced by Las Vegas-based Global Experience Specialists, Inc.



© DISNEY/WALDEN. THE CHRONICLES OF NARNIA, NARNIA, and all book titles, characters and locales original thereto are trademarks and are used with permission.



727 W. Main Street / Louisville, KY 40202 / 502-561-6100 / LouisvilleScience.org

2010-2011